

School Council
Expression of Interest (EOI)
Outside School Hours Care (OSHC) service at [Collingwood College](#)

Reference Number: [CC1122](#)

Submission Details:

Closing Time: [Monday 21st November, 4pm AEST/AEDST](#)

Place of Lodgement: All EOI submissions must be provided via email and received at the following email address before the Closing Date and Time:
Collingwood.co@education.vic.gov.au

Receiving Staff Member: [Sam Luck, College Principal, Collingwood College](#)

Submissions must follow the format attached, including the completion of all Forms, plus supporting documentation and any additional requested information.

CONDITIONS

1. EOI Presentations

Collingwood College ("the School") does not warrant the accuracy of the content of the EOI. The School will not be liable for any omission from the EOI document.

2. Confidentiality

The School may require persons and organisations wishing to access or obtain a copy of this EOI (or information relevant to this EOI) to execute a deed of confidentiality in a form required by, or satisfactory to, the School before or after access is granted.

Whether or not execution of a deed of confidentiality is required by the School, all persons obtaining or receiving this EOI and any other information in connection with the EOI must keep the contents of the EOI and such other information confidential and not disclose or use that information except as required for the purpose of developing a response to this EOI.

3. EOI Documents

All responses to the EOI and any accompanying documents will, upon submission, become the property of the School. The School will not return any of these documents.

By submitting a response to this EOI, the service provider licenses the School to reproduce the whole or any portion of the documents which it has submitted for the purposes of, or in connection with, its evaluation, notwithstanding any copyright or other intellectual property rights that may subsist in those documents.

4. Enquiries

Enquiries concerning the EOI must be made to the following Contact Person:

Name: Sam Luck
Title: College Principal
E-mail: Samuel.Luck@education.vic.gov.au

All enquiries concerning the EOI must be in writing and can only be made up to three (3) days prior to the Closing Time.

The School will respond to enquiries correctly lodged in accordance with the above conditions in writing and the response from the School will be provided to all parties that have requested a copy of the EOI document.

Should a service provider contact any person other than the Contact Person nominated above (including but not limited to: any parents and School Council member or office bearer, employee, school employee, departmental

officer or an employee of the current provider) in regards to this EOI, it may be disqualified from the EOI process and may be ineligible for consideration.

5. Late EOI

If an EOI is lodged after the Closing Time, it may be disqualified from the EOI process and may be ineligible for consideration unless:

- The service provider can clearly document to the satisfaction of the School that an event of exceptional circumstances caused the EOI to be lodged after the Closing Time; and
- The School is satisfied that accepting a late submission would not compromise the integrity of the process.

The determination of the School as to the actual time that the service provider's response is lodged is final. All EOIs lodged after the Closing Time will be recorded by the School. The School will inform service providers whose EOI was lodged after the Closing Time of their ineligibility for consideration.

6. Incomplete EOIs

If an EOI does not include all the information in the format required by the EOI or is incomplete in any way as determined by the School in its sole discretion, it may be rejected.

7. Validity of EOIs

An EOI will be valid for acceptance by the School for a period of 90 business days from the Closing Time. This period may be extended by mutual agreement between the parties.

8. Supplier Code of Conduct

Bidders are required to meet or exceed the government's supplier code of conduct - <http://www.procurement.vic.gov.au/Suppliers/Supplier-Code-of-Conduct>

9. Unauthorised Communication and Improper Assistance

Service providers are required to direct all communications through the Contact Person, unless advised otherwise by the Contact Person or the School. Unauthorised communication and/or seeking to obtain assistance of employees, agents or contractors of the School in preparation of their proposal may, in the absolute discretion of the School, lead to disqualification of an EOI submission.

10. Reservation

The School reserves the right to, in its absolute discretion, refuse to consider or accept any EOI or all EOIs. The School will not necessarily accept the lowest priced EOI nor any other EOI. The School further reserves the right to:

- a) Reject all EOIs without giving reason for the rejection; and
- b) Accept a portion or the whole of any EOI at the price or prices quoted unless the EOI states specifically to the contrary.
- c) Negotiate with one or more service providers and allow any service provider to vary its EOI.

11. Preferred service provider

Selection as a preferred service provider does not give rise to a contract (express or implied) between the preferred supplier and the School Council for the supply of Services. No legal relationship will exist between the School and the preferred supplier until such time as a binding agreement is executed by both parties.

12. Conflict of Interest

When submitting its submission, the service provider must declare any actual or potential conflicts of interest which may arise between the service provider and the School or the School and any subcontractor which the service provider proposes to engage in respect of the supply of Services.

EOI DETAILS

1. Background

Collingwood College is a government P-12 school established in 1882 and is located in the inner-city suburb of Collingwood, close to Melbourne's CBD. The school currently has 745 students enrolled.

The school has moved from high socioeconomic disadvantage to the mid-range of the School Family Occupation Education (SFOE) Index. The school draws students from many different suburbs in and around Melbourne.

Students at Collingwood college are a part of a community where all members are active participants in building a welcoming school culture that values diversity and inclusivity.

Collingwood College has developed a structure that best suits the learning needs of students at different ages. The main campus is arranged into two sub-schools; Primary and Secondary. Each sub-school is arranged to create the most appropriate setting and approach for children at the different stages of their development. Well known as the pioneer school for the Kitchen Garden Program, Collingwood College offers innovative and progressive teaching and learning approaches at the Primary and Secondary levels, including new design options for senior students.

The Educational Programs consist of Mainstream Program inspired by a Reggio Emilia approach and a specialist P-10 Steiner Program based on the Victorian Curriculum. At the Senior Level, the choice of subjects available is augmented and increased by a co-operative arrangement with Fitzroy High School offering the joint provision of an extensive range of VCE programs. At the beginning of 2022 Collingwood College and Fitzroy High School opened its new shared Senior College Campus – Wurun.

Collingwood College boasts outstanding learning, sporting and performing arts facilities. These include a fully-equipped theatre, dance studio, refurbished science and technology precinct, as well as a championship sports centre that consists of three gymnasiums.

The College grounds include various play areas, including shaded areas for students, landscaped gardens and spaces for outdoor learning.

In 2023 approximately 300 students will be enrolled in years P-6.

In 2024 the Collingwood College Early Childhood Centre will open. It is expected that Primary School enrolments will increase as a result.

The Outside School Hours Care (OSHC) Service is required to cater for the following approximate number of children of school age during both Victorian term periods and vacation periods.

- Before School numbers: 40
- After School numbers: 55
- Student Free Day numbers: 55
- Vacation Care numbers: 55
- Early school finishes/ End of term early finishes: 55

Site visit: The Principal of [Collingwood College](#) offers prospective providers an opportunity to view the school OSHC facilities on [Thursday, November 10th, 2022](#).

Service providers are required to advise the Contact Person of their intention to attend by close of business [Wednesday, November 9th](#). No more than two (2) attendees from the same service provider may attend the same site visit. All attendees must sign the attendance record, which will be provided at each site visit.

A current OSHC Service [does exist](#) at the College. However, this does not include before-school care, which now is a priority for the College as the school start time for the day is being moved back 15 minutes (to cater for staff travel between campuses)

Facilities available for use by the successful service provider to deliver the services required include [a separate kitchen \(including storage\)](#), [a large administration office with phone/internet](#), [a general storage room](#), [some furniture \(tables and chairs\)](#) and [wall space available for displays](#). School grounds for use include a large

undercover mezzanine/play area and various outdoor learning spaces and playgrounds, including a Kitchen Garden area. There is an all-weather oval, various playgrounds and an outdoor basketball court that is gated and for the exclusive use of the OSHC provider.

Further information regarding OSHC in schools can be found at:

www.education.vic.gov.au/school/teachers/management/Pages/oshc.aspx

2. Scope

Length of Service:

To provide Outside School Hours Care to the School community for a 3-year contract with an option for a 2 year extension.

Required Operating Hours:

- Before school care – 7:00am – 8:50am
- After school care – 3:15pm– 6:15pm
- Student free day – 7:00– 6:00 pm
- Vacation care – 7:30 am – 6:15 pm
- Early school finishes/ End of term Early finishes – 12:00 – 6:15pm

The provider will be allowed access to the space 30 minutes before and 30 minutes after the required operating hours to provide opportunity to set up and pack up the area for OSHC use.

School Council statement:

The School Council wants the OSHC to provide an education and care service to the school community.

The School Council believe that OSHC should be a place for growth, nurture and building long-term life skills.

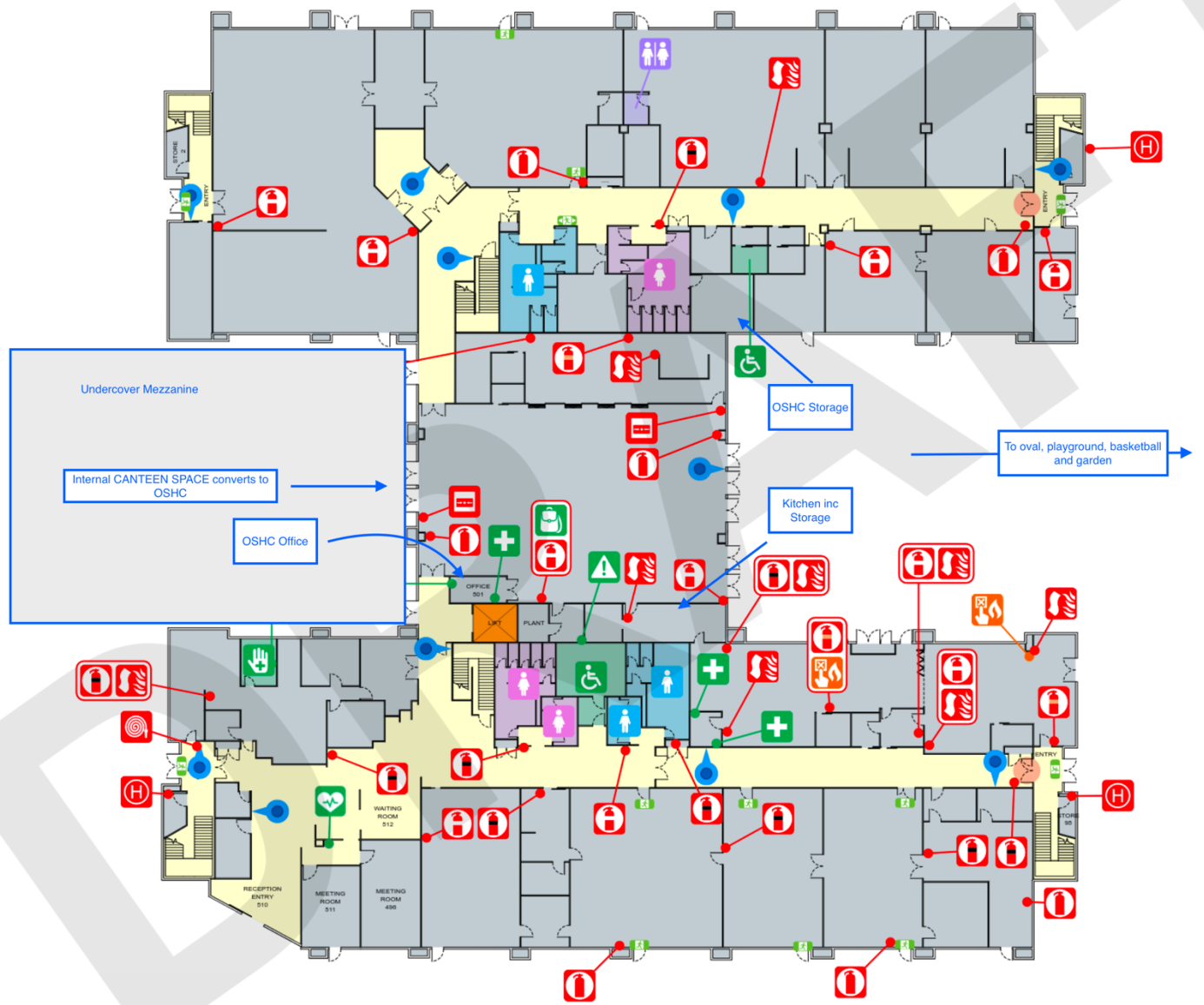
The School Council believe that all employees that work in the OSHC service should be facilitators of positive development who provide a safe, engaging environment and intentionally support positive social, emotional, logical thinking, moral, and life skills development; that they teach social skills and nurture healthy interactions.

The School Council believe children should have the opportunity to:

- Engage in play and leisure activities.
- Learn new skills to further their development.
- Be safe and supervised at all times.
- Build relationships with educators in a community which is connected to but separate from the school community.
- Develop as happy, healthy and resilient individuals.
- Engage in indoor and outdoor play activities planned with and for the children.
- Participate in a range of developmentally appropriate options that cater for the needs and interests of all children including construction, drama, dress-ups, art and craft, cooking, quiet reading and games.
- Experiences and programs delivered by external educators and organisations coming into the service such as language, performing arts, sports etc.

The School will license the following facilities

- Outdoor ovals / and outdoor basketball courts and playgrounds.
- Toilets (M/F) for both staff and students.
- Kitchen (Parent kitchen)
- Undercover mezzanine
- Canteen space that provides direct external access.



Required regulatory compliance:

It is the responsibility of the selected service provider to comply with the *National Law and National Regulations* at all times. Any updates or changes to the facilities to meet these requirements will be the cost/ responsibility of the service provider. Particular attention should be paid to the following:

- 3.25 square metres of unencumbered indoor space per child (r.107)
- 7 square metres of unencumbered outdoor space per child (or additional unencumbered indoor space with approval of the Victorian regulatory authority) (r.108)
- outdoor spaces must provide adequate shade and allow children to explore the natural environment (r.113—4)
- the availability of areas that can be used to support children to rest if needed (r.81)
- the accessibility of toilets (r.109)
- the provision of adequate heating/cooling, ventilation and natural light (r.110)
- the availability of administration space and space for conducting private conversations (r.111)
- whether the area promotes visibility and facilitates effective supervision (r.115)
- the cleanliness and safety of the premises, furniture and equipment (r.103)
- prescribed information required to be displayed (r.173)

Child Safe Standards:

As of 2016, all early childhood services (including OSHC) and schools are required to comply with Child Safe Standards. Child Safe Standards were updated in 2022 and the standards are as follows:

- Organisations establish a culturally safe environment in which the diverse and unique identities and experiences of Aboriginal children and young people are respected and valued
- Child safety and wellbeing is embedded in organisational leadership, governance, and culture
- Children and young people are empowered about their rights, participate in decisions affecting them and are taken seriously
- Families and communities are informed, and involved in promoting child safety and wellbeing
- Equity is upheld, and diverse needs respected in policy and practice
- People working with children and young people are suitable and supported to reflect child safety and wellbeing values in practice
- Processes for complaints and concerns are child focused
- Staff and volunteers are equipped with the knowledge, skills, and awareness to keep children and young people safe through ongoing education and training
- Physical and online environments promote safety and wellbeing while minimising the opportunity for children and young people to be harmed
- Implementation of the Child Safe Standards is regularly reviewed and improved
- Policies and procedures document how the organisation is safe for children and young people

The service provider must advise as part of the EOI submission how they have implemented, operate and comply with the Child Safe Standards. The service provider must attach working with children clearances and attest to complying with the Victorian Child Safe Standards, including:

- having a Child Safety and Wellbeing Policy
- having a Child Safety Code of Conduct
- conducting child safe screening of all staff working with children, including requiring a Working with Children clearance.

Capability of provider:

A person's capability to operate an education and care service is of critical importance. Updates in the national law as of 2017 have been identified to address this through specifying:

- Either the approved provider, a nominated supervisor, or a Person in day to day charge must be present when a service is operating
- Services will be able to have more than one nominated supervisor
- The approved provider will be responsible for ensuring the person they appoint as a nominated supervisor must be fit and proper and have suitable skills to supervise the service
- A nominated supervisor will need to consent in writing to appointment to the role
- Each nominated supervisor and person in day to day charge will have to undertake child protection training

The service provider must advise as part of the EOI submission how they have implemented, operate and comply with the Child Safe Standards.

Food and drink:

The successful service provider **will be** required to provide food and drink to students as a part of the OSHC Service. **The provider will have access to the adjoining kitchen, including sink, dishwasher, fridge, freezer and storage.**

Any food and drink supplied must be nutritious, in adequate quantity and take into account the child's growth and developmental needs and cultural, religious and health requirements (r.79). An accurate weekly menu must also be displayed (r.80).

Cleaning

The service provider will be expected to undertake minor cleaning duties prior to operation.

Before school care:

- **Spot check, and if required, a light clean of the areas to be used, including toilets.**

After school care:

- **A spot check of areas to be used, including outside areas. Minor rubbish/hazard removal**
- **Sweeping and emptying bins in designated toilets. If required, mopping/wiping of area as well as restocking of supplies**
- **Aftercare floorspace to be swept daily before use. Bins to be emptied.**

Holiday program:

- A spot check of areas to be used, including outside areas. Minor rubbish/hazard removal
- Sweeping and emptying bins in designated toilets. If required, mopping/wiping of area as well as restocking of supplies
- Aftercare floorspace to be swept daily before use. Bins to be emptied.

The college cleaners are available to undertake this work, however this would come at the expense of the service provider.

Maintenance / Repairs:

Any maintenance or repairs required, beyond reasonable wear and tear, must be prepared by the service provider. If these are not rectified in a timely way, the School Council may do so, and any costs will be invoiced direct to the service provider.

Transition / Implementation Plan:

The successful service provider, if not the incumbent, is required to provide a transition plan, which includes but is not limited to an outline of the hand over process, appropriate handling of children details and data, removal of the outgoing service provider's equipment and cleaning/maintenance requirements.

Referees:

Service providers are required to nominate three (3) customers (preferably schools) to whom they currently provide similar services. The School reserves the right to also contact known customers of the service provider to seek customer feedback. Feedback will be sought in respect of, but not limited to, the service provider's performance, charges, responsiveness and complaint resolution.

3. Important Dates

- School site visit date(s): Thursday 10th November. Register by sending email to Collingwood.co@education.vic.gov.au
- EOI Closing date: Monday November 21st 4:00pm
- EOI proposals shortlisted by: Friday 25th November
- Shortlisted service providers invited to present to selection committee Monday 28th November
- Decision made regarding preferred service provider: Wednesday November 30th
- Preferred service provider informed of decision and beginning of contract negotiations: Wednesday December 7th
- **Commencement of service to the School: 27/1/2023**

4. Reporting and meeting requirements

The service provider's representative is required to meet, where requested, with a nominated representative, School Council or subcommittee once per quarter to review vacancies, complaints and waiting lists, at a minimum.

The service provider will be required to report to a nominated representative, School Council or subcommittee as follows:

Quarterly on the following items

- National Quality Standard (NQS) assessment and rating reports provided by regulatory authority, relevant to the service
- Any breaches or non-compliance with the National Quality Framework (NQF) requirements
- Programming changes
- Staffing
- Policy changes
- Incidents
- All complaints received, and action taken to resolve complaints and timeframe for resolution
- Service usage and vacancies
- Waiting lists

Within 30 days of commencing, and then on an annual basis a copy of the following:

- NQF Audits
- Current Suitability Notices for all specified employees
- Copies of any new or renewed Insurances

An ad hoc basis, which would be required to be responded to within ten (10) business days:

- Average utilisation rate for each session of education and care provided
- Details of children enrolled in the OSHC Service including their attendance
- Copy of educator rosters
- All complaints received and any action taken to resolve these complaints and the timeframes for resolution
- Child, parent and staff feedback
- Details/results relating of any National Quality Framework audit conducted in connection with the OSHC Service

Report the following within two business days:

- Incidents, injuries or issues that have impacted in the health, safety or wellbeing of any child
- Occupational health and safety matters
- Any Formal Compliance Directive issued to the Licensee by the Regulatory Authority in connection with the OSHC Service
- Where the service provider has been charged with a criminal of regulatory matter, found guilty by court, cautioned, or otherwise pursued by either the Police, Local Authority or other regulatory body or subject to enforcement activity.

Report any instances where the service provided, in relation to the licensed premises, have been assessed and rated as Significant Improvement Required under the National Quality Framework within five business days.

A report prior to the commencement of any new specified personnel detailing name, contact details and a copy of the Working with Children Check.

Upon occurrence immediately report:

- Damage to or an accident in the licensed area
- Any notice or report received in relation to the licensed area, and provide a copy of the report

Key Performance Indicators (KPIs) =

KPI	Performance Target
NQF Rating	NQF ratings to remain at Meeting or Exceeding the National Quality Standard (NQS) for all 7 quality areas.
User Satisfaction	85% of children users to respond either at or above expected satisfaction levels based on a satisfaction survey, if requested by School Council.
Customer Service	85% of adult users to respond either at or above expected satisfaction levels. This would be based on a survey devised in consultation with the School Council.
Reporting	100% of reports to School Council are delivered within the nominated timeframes.

Submissions must address the service provider’s provision of quality management systems and key KPIs used to track the performance of the contract.

5. Licence Fees & Amounts Payable

If applicable, the successful service provider will be required to pay a Licence Fee. The licence fee will be paid on a quarterly basis. Licence fees will be reviewed annually, prior to the anniversary of the contract.

The successful service provider will be required to pay a security deposit of \$1000.00 prior to commencement of the service.

6. Insurance

Minimum insurances the service provider are required to hold include:

a) Public Liability Insurance

\$10 million per event.

b) Property Insurance

Insurance cover for the reinstatement or replacement value of the Licensees’ own property against the destruction of or damage of such property which is housed, stored, kept or used in or at the Licensed Area.

c) WorkCover Insurance

Insurance in accordance with the requirements of the *Accident Compensation Act 1985 (Vic)* and the *Accident Compensation (Work Cover Insurance) Act 1993 (Vic)* which provide the Associates of the service provider (including equivalent cover for volunteers) with cover against personal injury or sickness arising from provided goods or services or working in or on the Licenced Area.

7. Selection Criteria

The selection criteria for rating responses received from service providers are as follows

1. Quality:

- Demonstrated experience as an approved provider of OSHC service(s). This may include evidence of overall assessment and rating(s) against the National Quality Standard of at least Meeting for similar service(s) operated by the approved provider.

- Demonstrated ability to plan, deliver and monitor an education program that reflects the needs and values of a school community.
- Commitment to the appointment and retention of suitably qualified staff and their ongoing professional development.
- Demonstrated knowledge and understanding of the process to develop a Quality Improvement Plan and ensure continuous improvement.

2. Value for money:

- A proposed fee structure that offers value for money for families and allows all children to participate.
- A proposed fee structure that considers how all children may participate in activities that incur an additional cost.
- A transparent process for revising fees, including those for cancellations and late pick-up fees.
- A proposed licence fee that provides good value to the school community and gives a clear outline of all costs that may fall to School Council. This may include any income shortfall situations, advertising, utilities and maintenance.

3. Financial viability:

- The provider must be financially viable and have the capacity to apply sufficient financial and other resources to a new service.

4. Policies and processes:

- Demonstrated experience in engaging families in the policies and programs of an OSHC service.
- Demonstrated commitment to enacting policies and processes that reflect the needs and values of a school community.
- Demonstrated understanding of compliance and regulatory requirements in operating an OSHC service and commitment to Child Safe Standards.

5. Information sharing:

- Commitment to the information sharing detailed in the Department of Education and Training's OSHC Licence Agreement.

6. Past experience in delivering the same service to schools supported by a good reference check

- Demonstrated qualifications, experience, capacity and resources of the provider in the provision of similar services
- The provider must submit with their proposal, a list of referees, contact names and phone numbers and past school clients for whom similar services have been satisfactorily provided.

The above selection criteria are not presented in any particular order or ranking.

8. Contract Documentation

The successful service provider will be required to enter into an agreement with the School Council under the terms and conditions of the DET OSHC Licence Agreement, as attached to this EOI.

Special conditions may be included subject to the agreement of the School Council.

FORM 1 – COMPANY DETAILS

Attached is the Expression of Interest of:

Business / Corporation / Person: (Businesses list all proprietors)	
Postal Address:	
Street / Physical Address:	
Australian Business Number (ABN):	ABN: OR <ul style="list-style-type: none"> Will you be applying for an ABN? Yes <input type="checkbox"/> No <input type="checkbox"/> (mark appropriate box)
Is it proposed to sub-contract any part of the Goods and/or Services? If "YES", specify full name and address of each sub-contractor and their relevant experience and expertise in relation to the offered Goods and/or Services	Yes <input type="checkbox"/> No <input type="checkbox"/> (mark appropriate box)
Size	Small <input type="checkbox"/> Medium <input type="checkbox"/> Large <input type="checkbox"/> Not for profit <input type="checkbox"/> (mark appropriate box) <i>Note: Small to Medium Enterprises (SMEs) are defined as firms with less than 200 full time equivalent employees. Under 20 full time equivalent employees is defined as Small, 20-199 full time equivalent employees is defined as Medium and 200 plus full time equivalent employees is defined as Large.</i>
Supplier Diversity Status	Indigenous Business <input type="checkbox"/> Disability Enterprise <input type="checkbox"/> Social Enterprise <input type="checkbox"/> Not Applicable <input type="checkbox"/> Other: _____ (mark appropriate box) <i>Note: Please include copies of relevant documentation to support your Supplier Diversity Status</i>
Contact Name, Phone and Fax No:	
Contact email address:	
Authorised Signature(s):	
Name(s):	
Date:	

FORM 2 – SPECIFICATION STATEMENT

Please provide a written statement including:

- How you are best placed to meet the scope
- Details of your knowledge and previous experience in delivery of OSHC
- Details of your knowledge, resources and systems that will enhance the delivery of the OSHC service
- Any value added services, such as innovation, operating above staff ratio

FORM 3 – OFFER REQUIREMENTS

1. Does your organisation understand and agree to provide the OSHC Services during the Hours of Operation outlined below:

Yes No

Period	Start Time	Finish Time
Before School Care	<<00:00>>AM	<<00:00>>AM
After School Care	<<00:00>>PM	<<00:00>>PM
Student Free Day	<<00:00>>AM	<<00:00>>PM
Vacation Care	<<00:00>>AM	<<00:00>>PM
Early school finishes/ end of term finishes	<<00:00>>AM	<<00:00>>PM

Hours of Operation cannot be varied without agreement in writing from a nominated representative and relevant regulatory approvals.

(if alternative hours of care are proposed, please attach details)

Response:

2. Does your organisation understand and agree that the proposed Commencement Date for the OSHC Service is [\[insert Date\]](#)?

NOTE: This date is proposed only and the exact commencement date will be agreed to by the school and any successful service provider and may depend on time taken to receive Site Licensing Approval.

Yes No

3. Does your organisation currently have provider approval to operate an OSHC service?

Yes No

Please attach proof of this approval to the EOI response.

4. Has your organisation made full disclosure of all fees and charges in the Form 6 - Pricing Schedule?

Yes No

If No Response:

5. Does your organisation currently have the financial capacity to deliver the service?

Yes No

Please provide details of your organisation's financial capability, such as a credit check, or steps that will be taken to improve the financial capability:

FORM 4 – HIGH QUALITY OSHC SERVICE

1. Please provide information on the education program you plan to offer (r. 75)

1a. Please provide a copy of the approved learning framework for the service.

1b. Service providers are to provide a sample of a routine five (5) day program for one calendar week (Monday to Friday) for both Before and After School Care and a five (5) day sample program for Vacation Care (if applicable), highlighting the diversity and quality of the activities and inclusive of the consideration of students with a disability or special needs.

1c. Service providers are also to address their approach to the following:

- Delivery of the educational program
- Staffing of the program and staff
- Review/ customisation of the program
- Approach to inclusion of all children

Response:

Has your organisation attached the sample programs?

Yes No

2. Provide details of quality resources/play equipment available to support the programs being provided for use at the school site. Include a detailed list of both, resources and equipment as well as the estimated dollar value of resources and equipment.

Response:

3. Please identify how your organisation has implemented and compiles with the Child Safe Standards?

Response:

4. Service providers are required to provide details of how they will continue to strive for an improvement in services at the nominated site in order to achieve higher ratings awarded by the National Quality Framework Audits?

4a. Provide a sample Quality Improvement Plan (Maximum 5 pages)

Response:

5. Provide details of all services associated with Approved Provider's individual Service Assessment and Ratings under the National Quality Framework (NQF). Provide the overall service rating(s).

Response:

Number of Services currently operated in Victoria

Number of Services that have been assessed while you were the approved provider under NQF

Number of Services yet to be assessed under NQF

Number of Services with each rating while you were the approved provider

Exceeding National Quality Standard (NQS)

Meeting NQS

Working towards NQS

Significant improvement required to meet NQS

6. Detail below the enrolment numbers that your organisation considers to be the minimum number required to ensure a viable OSHC Service can be provided at this school.

Response:

Service Provided	Minimum Enrolments
Before School Care	
After School Care	
Student Free Days	
Vacation Care	
Early school finishes/ end of term finishes	

6a. Please detail how you would manage an increase in size.

7. Provide details on how children and families will benefit should your organisation be selected as the successful service provider.

Response:

8. Provide your complaints process, including escalation procedure.

Response:

9. Please provide copies of the following forms/documents as part of your response, as they relate to The National Law and National Regulations.

- Incident, injury, trauma and illness record forms (r.87)
- Medication record forms (r.92)
- Emergency and evacuation plans (r.97)
- Attendance and enrolment record forms (r.158-162)
- Policies and procedures (r.168 and r.171)
- Storage of records policy (r.183, and as set out in r.177)
- Law and regulations that will be accessible at the service (r.185)

Response:

FORM 5 – QUALITY PERSONNEL AND PROCESS

1. Provide details of how you will recruit the staff required for the service and timeframe involved?

Response:

Add cross-referenced attachment if required.

2. Provide details of your proposed team information for the delivery of the OSHC Service for this Site. This information should include:

- Detail titles, roles, responsibilities, qualifications and experiences for each title listed.
- Identify the names of the personnel you plan to put forward and relevant qualifications (if applicable).
- Identify which roles you plan to recruit staff for.
- Outline how you intend to meet the capability requirements as outlined in the scope.
- Any use of temp or agency staff

Response:

2a. Does your organisation agree that all relevant personnel will hold appropriate accreditations and qualifications in terms of National Quality Framework for Early Childhood Education and Care and comply with the National Law and National Regulations, prior to commencement of employment at this Outside School Hours Care service?

Yes No

If "No", Provide Details:

2b. Please indicate if you will provide, one month prior to commencement of services if selected, the names, qualifications, and a photocopy of the Working with Children Check or the receipt of application and contact details for all specified personnel.

Yes No

3. Provide information on your organisation's process regarding the following:

- Enrolments
- Bookings
- Payments

Payment in arrears (end users are able to pay for services after attendance)	Yes <input type="checkbox"/> No <input type="checkbox"/>
Payment in advance (end users are required to pay for services prior to attendance)	Yes <input type="checkbox"/> No <input type="checkbox"/>

Accepted payment methods:

Direct debit	Yes <input type="checkbox"/> No <input type="checkbox"/>
--------------	----------------------------------------------------------

Cash	Yes <input type="checkbox"/> No <input type="checkbox"/>
Cheque	Yes <input type="checkbox"/> No <input type="checkbox"/>
Money order	Yes <input type="checkbox"/> No <input type="checkbox"/>
Credit card	Yes <input type="checkbox"/> No <input type="checkbox"/>
BPay	Yes <input type="checkbox"/> No <input type="checkbox"/>
Other (please specify):	Yes <input type="checkbox"/> No <input type="checkbox"/>

If Yes, advise any Surcharge Fee(s) that apply (e.g. Credit Cards) _____

Response:

Add cross-referenced attachment if required.

4. Please advise whether the nominated facilities identified in the scope provide sufficient space for you to operate a service with the estimated numbers provided.

Response:

FORM 6 – PRICING SCHEDULE

All amounts quoted are to be exclusive of GST. Prices are not to include rebates or discount structures.

Please also include information on the process for setting and revising fees.

Licence fees

	[insert 20xx]	
Before School Care	Regular	\$
	Late Booking	\$
After School Care	Regular	\$
	Late Booking	\$
Student Free Day	Regular	\$
	Late Booking	\$
Holiday Program / Vacation Care	Regular	\$
	Late Booking	\$
Late collection Fees (If fees apply, detail how these are calculated).	Late collection	\$

With regard to other fees chargeable table below, the School would not expect these increase beyond CPI for each subsequent year of the contract.

Other Fees Chargeable	Fee Amount		Provide details
Enrolment, Membership or Application fee (please indicate)			
Absence Fee (advice of the absence is received) Please indicate whether the normal session fee would be charged and if a penalty charge is applied or if there is no charge applicable.	Session Fee	Penalty Fee	
Absence Fee (No notification of a child's absence from the service) Please indicate whether the normal session fee would be charged and if a penalty charge is applied	Session Fee	Penalty Fee	
Any other fees/charges (expand table as required) This is to include any charges applicable to payment of accounts			
Please provide information regarding incursions provided by your organisation including the type of incursions available, fees and cancellation policy.			
Please provide details of any situations where fees are adjusted, e.g.: siblings			
Please provide information regarding excursions provided by your organisation including the type of excursions available, fees and cancellation policy.			

FORM 7 – CONFLICT OF INTEREST DECLARATION

I / We, _____ make the following declaration of any actual or perceived conflict of interest, including but not limited to any pecuniary or other interests in [insert school name] or any relationships our staff and office bearers have with [insert school name] management, staff and/or School Council members.

Name (print)

Signed:

Date:

FORM 8 – CHILD SAFE STANDARDS ATTESTATION

I, _____, attest that the organization complies with the Victorian Child Safe Standards, including:

- having a Child Safety and Wellbeing Policy
- having a Child Safety Code of Conduct
- Conducting child safe screening of all staff working with children, including requiring a Working with Children clearance.

Signed:

Print name:

Title:

Date:

I/ We _____, attest that the organisation complies with the Victorian Child Safe Standards, including:

- having a Child Safety and Wellbeing Policy
- having a Child Safety Code of Conduct
- Conducting child safe screening of all staff working with children, including requiring a Working with Children clearance.

Signed:

Print name:

Title:

Date:

FORM 9 - REFEREES

1. Where possible, provide details of up to three (3) customers (preferably schools) to which your organisation has/is provided/providing a similar Service. NOTE: These schools MAY be contacted to verify past/present performances.

ORGANISATION	CONTACT PERSON	CONTACT NUMBER	EMAIL ADDRESS